

House in Zyobon-ji

2007.8



Photo by Akira Kita

A



Photo by Akira Kita

B



Photo by Akira Kita

C



Photo by Akira Kita

D



Photo by Akira Kita

E

THIS HOUSE'S PIECE OF LAND IS IN THE SOUTH OF NARA PREFECTURE, IN KASIWARA CITY. NEAR THIS CITY ARE MANY FORESTS AND FORESTRY-PRODUCT INDUSTRIES. THIS FACTOR STIMULATED ME TO GROPE FOR NEW POSSIBILITIES. I DECIDED TO USE LOCAL WOOD FOR THE ENTIRE STRUCTURE.

ALL POSTS AND BEAMS ARE 12 x 12 CM PIECES OF JAPANESE CYPRESS. ALL JOINTS ARE BOLTS. IT IS A VERY SIMPLE SYSTEM. EVERY POST IS CONSTRUCTED OF TWO 12 x 12 CM PIECES, SANDWICHING BEAMS AT RIGHT-ANGLES, AND STABILIZING THE JUXTAPOSITION WITH METAL BOLTS. THIS SYSTEM ENABLES FLOOR LEVELS TO BE ADJUSTED FREELY, SO THE UPPER FLOOR IS DIVIDED INTO FOUR DIFFERENT LEVELS. BY PUTTING THE LIVING ROOM, KITCHEN-DINING ROOM, DEN AND SOFA SPACE ON DIFFERENT LEVELS, PUNCTUATION BY WALL BECAME UNNECESSARY AND A FLOW OF LIGHT AND AIR BRINGS SPACIOUSNESS TO WHAT COULD CONVENTIONALLY HAVE BECOME A LIMITED SPACE.

ON ONE SIDE, THREE LEVELS OF FLOOR BEAMS EXTEND THROUGH TO BECOME VISIBLE CONSTRUCTION ON THE EXTERIOR AND CREATE OVERHANG FORMS, FOR A UNIQUE EXTERIOR VIEW.



F

Photo by Akira Kita

A : EXTERIOR

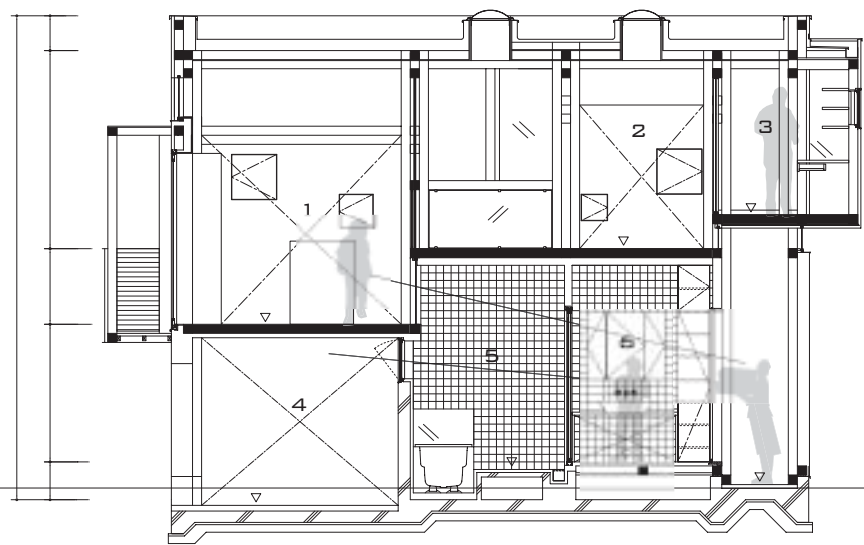
B : ENTRANCE & STAIRCASE

C : JAPANESE-TRADITIONAL-STYLE ROOM

D : INTERIOR VIEW FROM KITCHEN

E : INTERIOR VIEW FROM LIVING ROOM

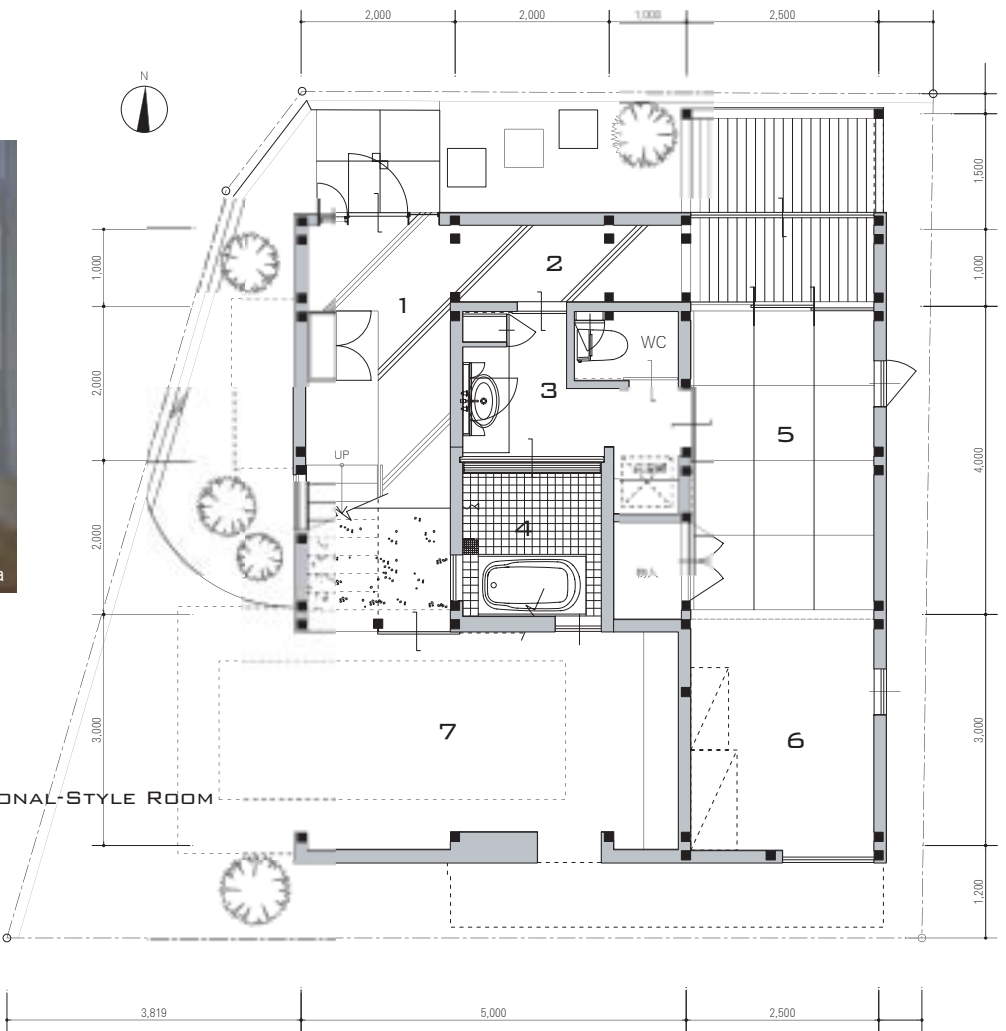
F : EXTERIOR VIEW FROM WEST SIDE



- 1 DINING KITCHEN
- 2 LIVING ROOM
- 3 DEN
- 4 PARKING SPACE
- 5 BATHROOM
- 6 LAVATORY



Photo by Akira Kita



- 1 ENTRANCE
- 2 EARTHEN FLOOR
- 3 LAVATORY
- 4 BATHROOM
- 5 JAPANESE-TRADITIONAL-STYLE ROOM
- 6 STORAGE
- 7 PARKING SPACE

DATA

PROJECT TITLE : HOUSE IN ZYOBON-JI
LOCATION : KASHIWARA CITY, NARA PREF, JAPAN
COMPLETION : 2007.8

PROJECT ARCHITECT : MASATO SEKIYA
STRUCTURAL CONSULTANT : TAKASHI TAKAMIZAWA
BUILDER : YOSHINO-ZAI CONSTRUCTION
STRUCTURE : WOODEN STRUCTURE
1F : 64.50 m²
2F : 63.09 m²
TOTAL AREA : 108.09 m²



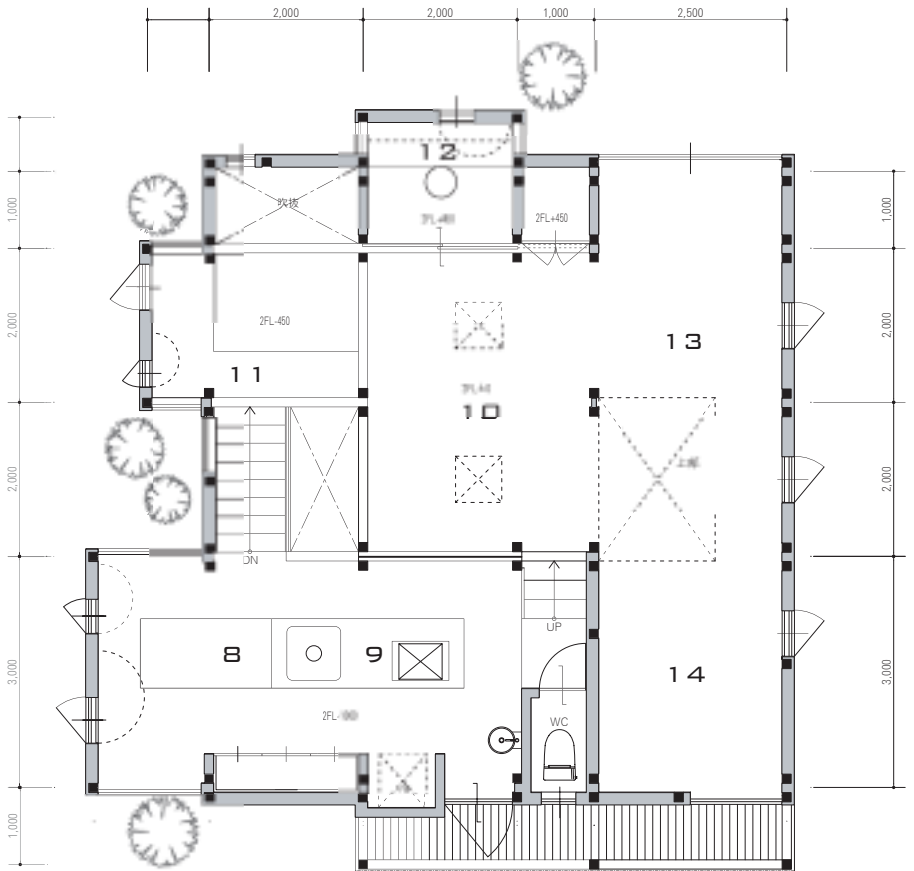
Photo by Akira Kita



Photo by Akira Kita



Photo by Akira Kita



- 8 DINING
- 9 KITCHEN
- 10 LIVING ROOM
- 11 SOFA SPACE
- 12 STUDY SPACE
- 13 KID'S SPACE-1
- 14 KID'S SPACE-2